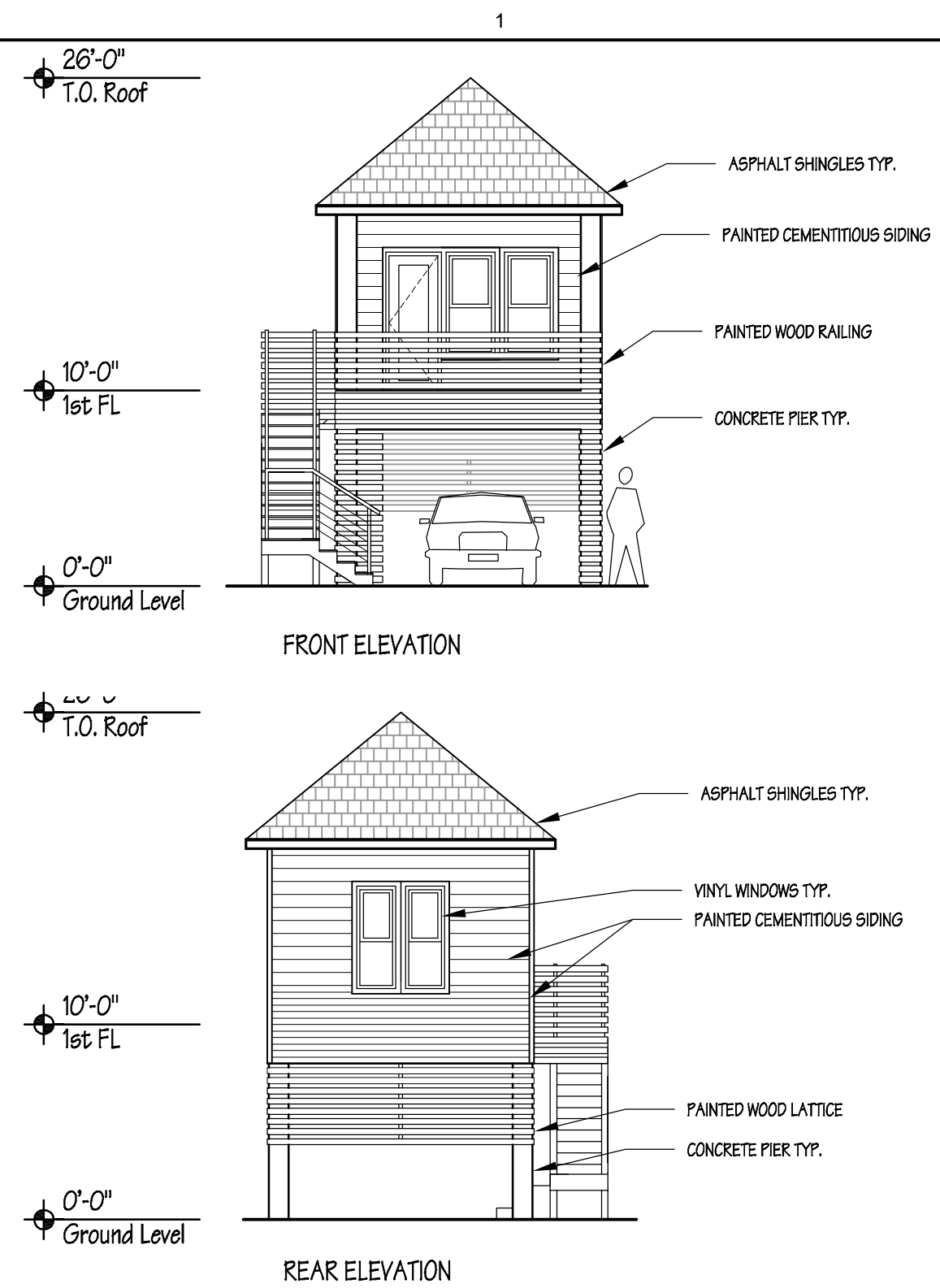
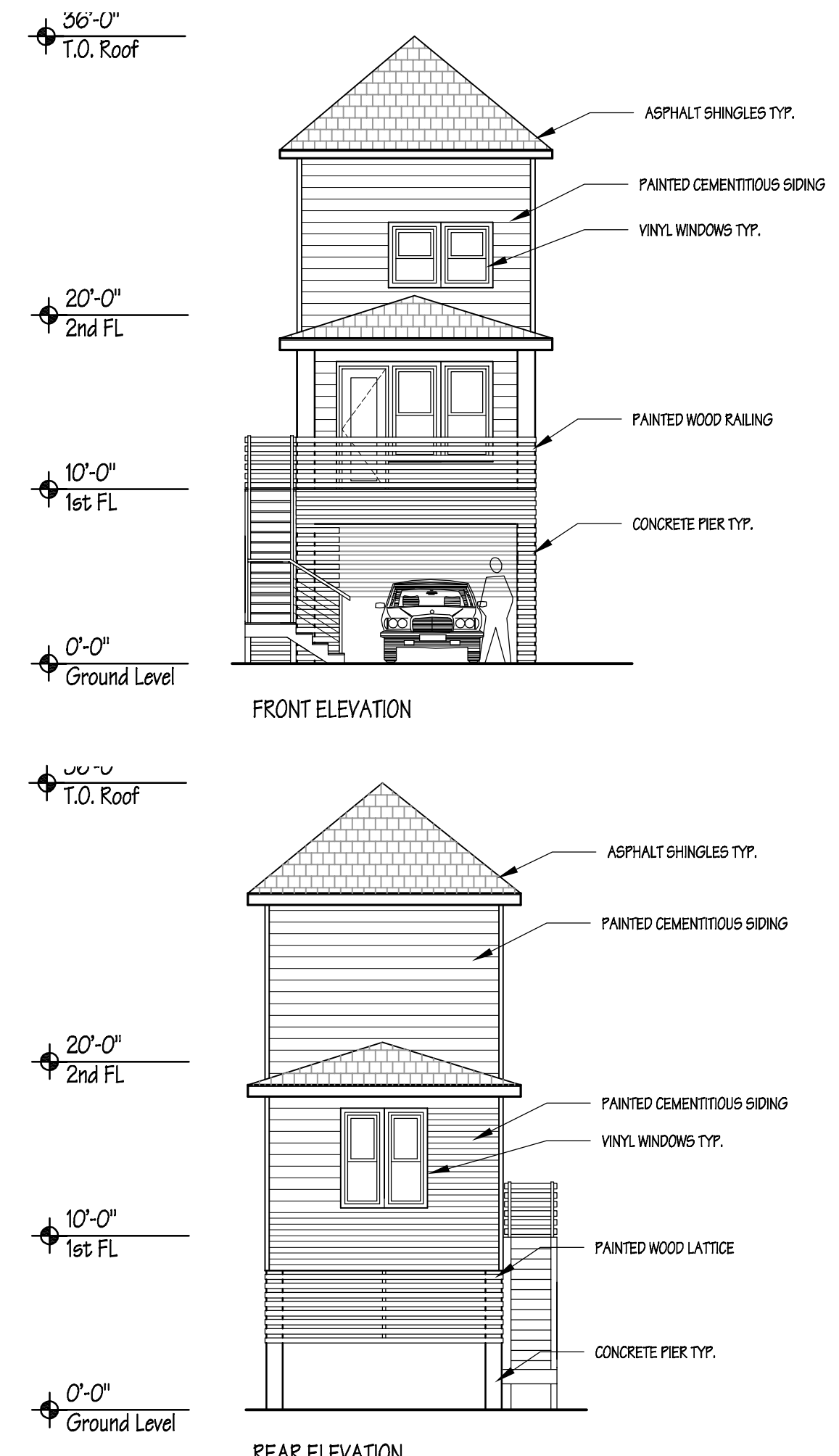


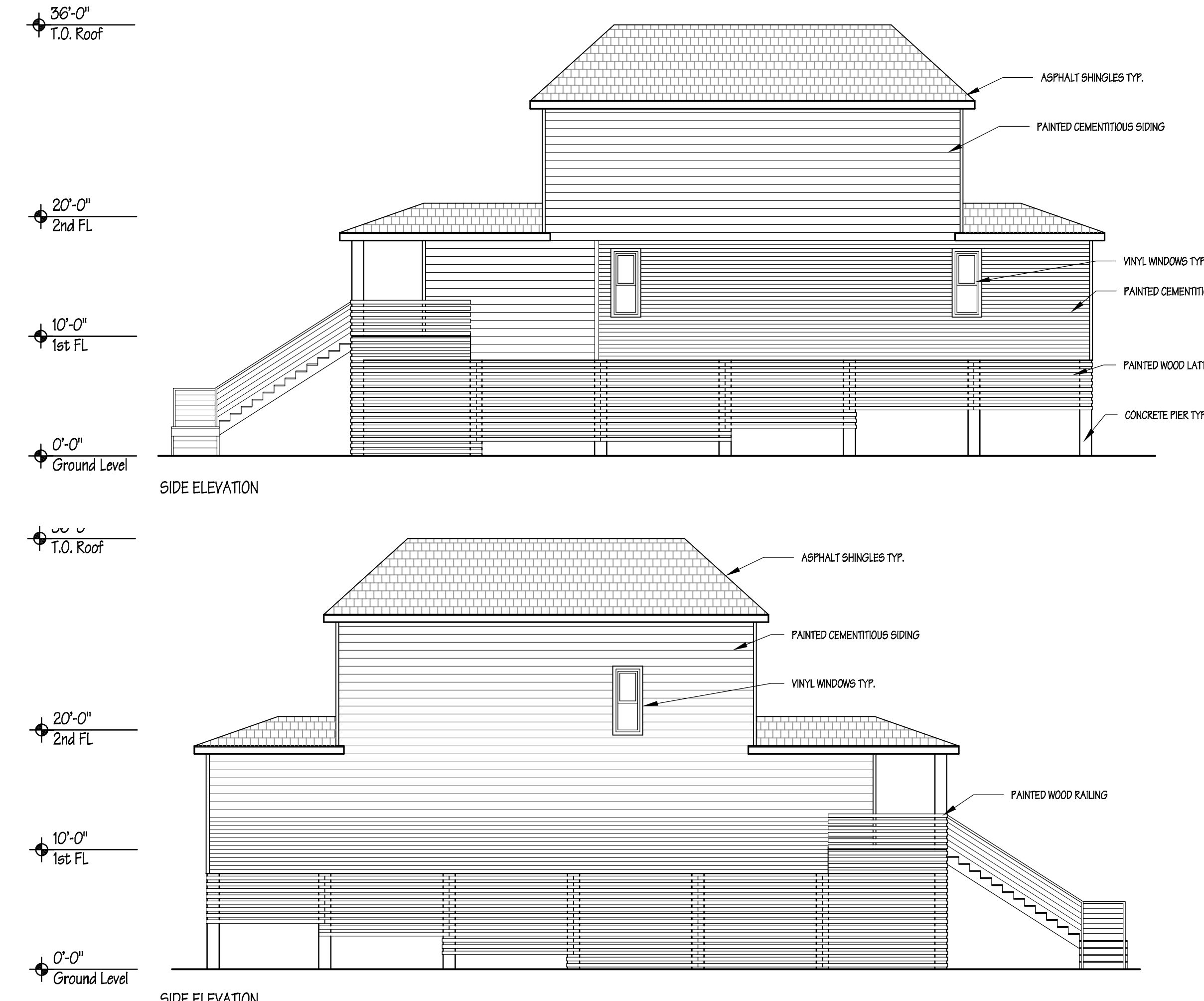
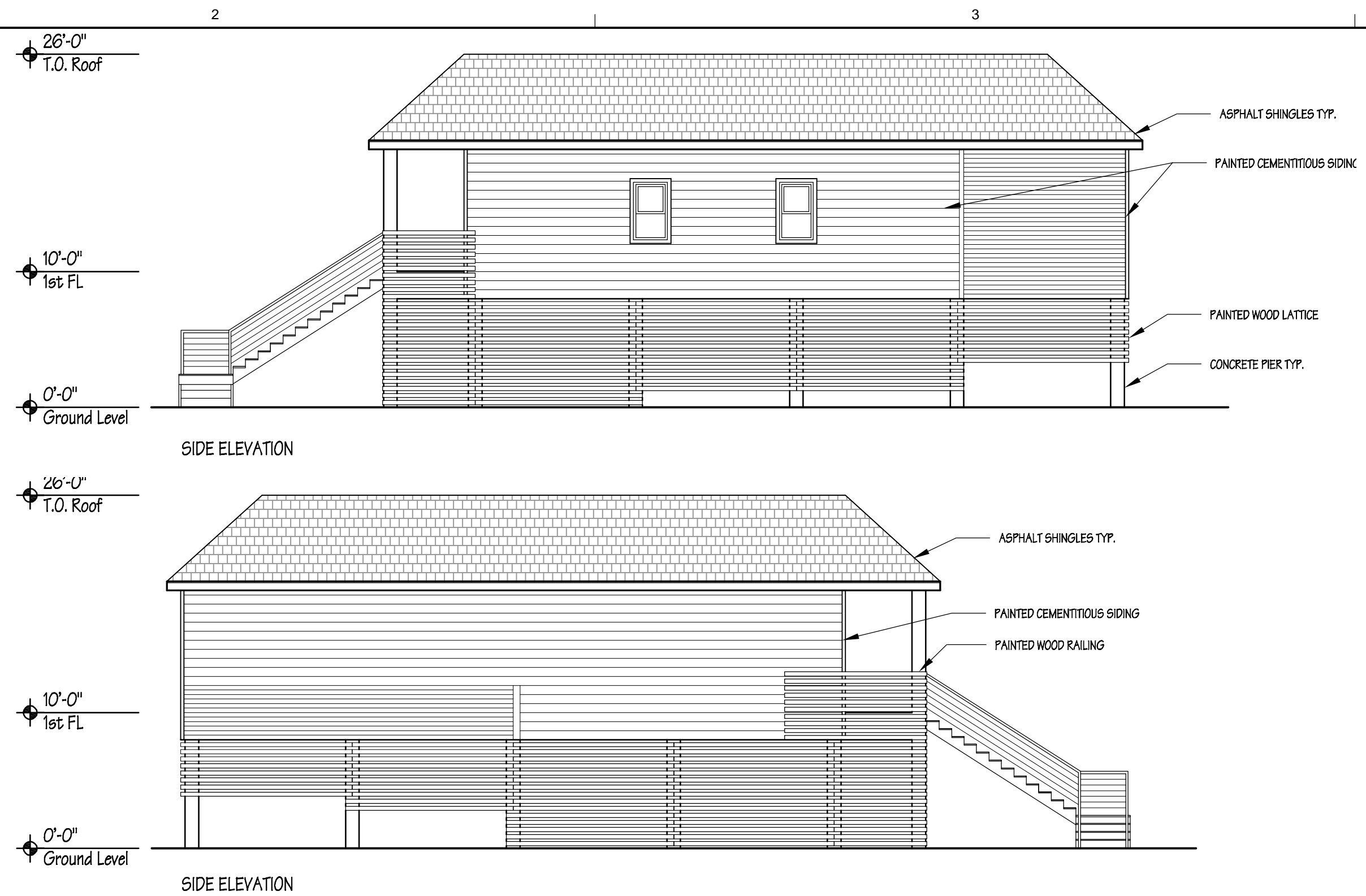
9/16/2013 5:05 PM G:\DWG\1317 NYC HOUSES STATEN ISLAND\10.0 DRAWINGS\10.1 CAD\10.11 XREF\10.112 SECTIONS-ELEVATIONS\1317 UNIT ELEVATIONS.DWG last saved by: jladyn



1 PROTOTYPE '1' ELEVATIONS
A-200 1/8" = 1'-0"



2 PROTOTYPE '2B' ELEVATIONS
A-200 1/8" = 1'-0"



3 TYPICAL BUILDING SECTION
A-200 1/8" = 1'-0"

NYC HOUSES STATEN ISLAND

Staten Island
New York, New York

Owner
...
Owner's Address

Developer
THE BLUESTONE ORGANIZATION
193-04 Horace Harding Expressway
Fresh Meadows, New York 11365

Architect
CURTIS + GINSBERG ARCHITECTS LLP
299 Broadway, Suite 1107
New York, New York 10007

Structural Engineer
WEXLER ASSOCIATES
12 West 32nd Street, 10th Floor
New York, New York 10001

MEP
RODKIN CARDINALE
CONSULTING ENGINEERS PC
224 West 29th Street
New York, New York 10007

No.	Date	Revision

No.	Date	Submission

Title:
ELEVATIONS

© 2013 CURTIS + GINSBERG
ARCHITECTS LLP

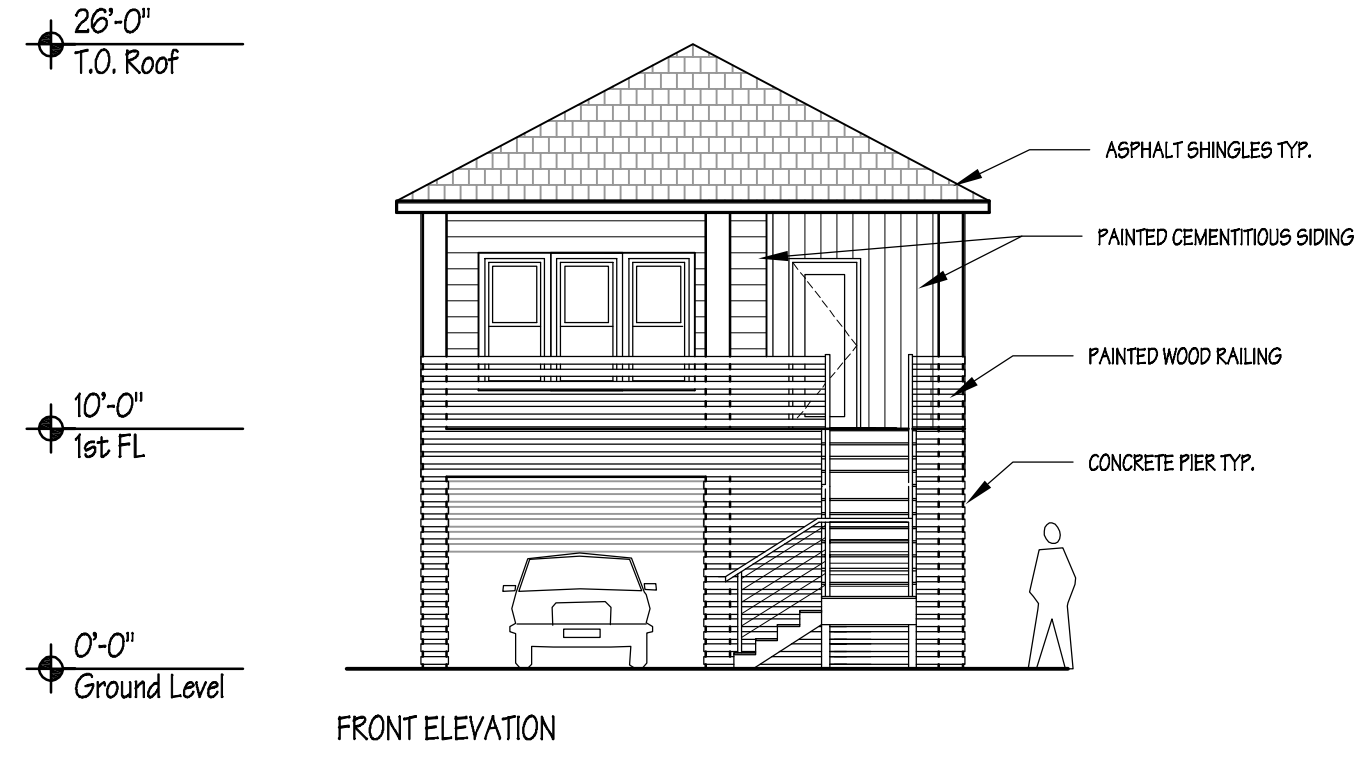
Job No.: 1317
Date: SEPT. 13, 2013
Scale: 1/8" = 1'-0"
Drawn By:
Checked By:

Sheet No.:

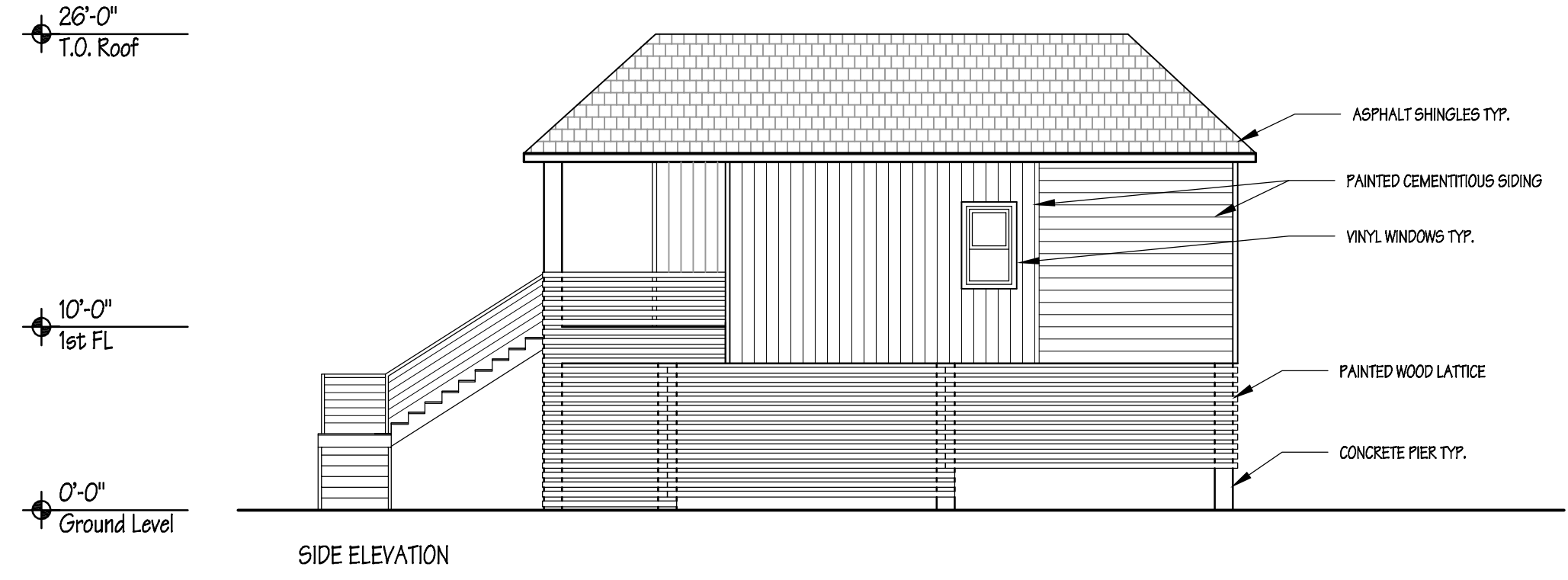
A-200

6 of 5

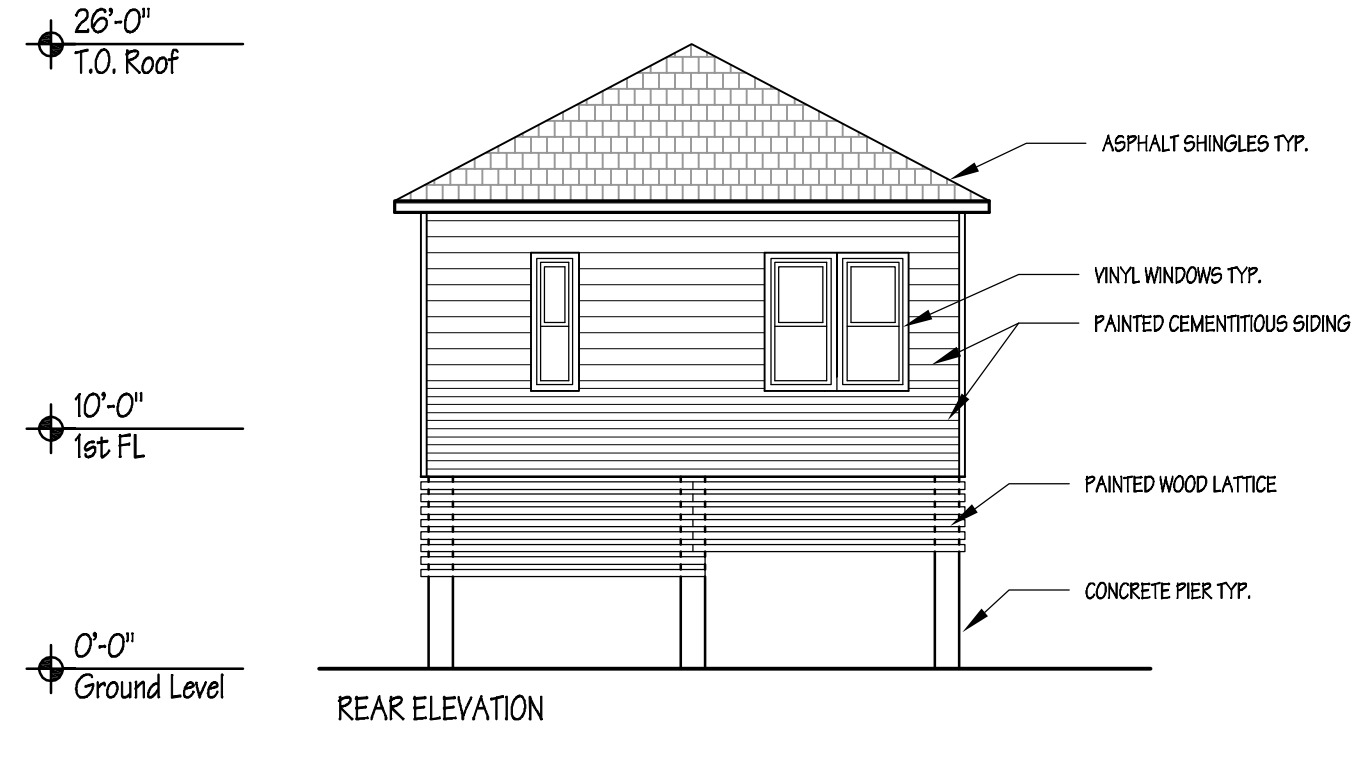
G:\DWG\1317 NYC HOUSES



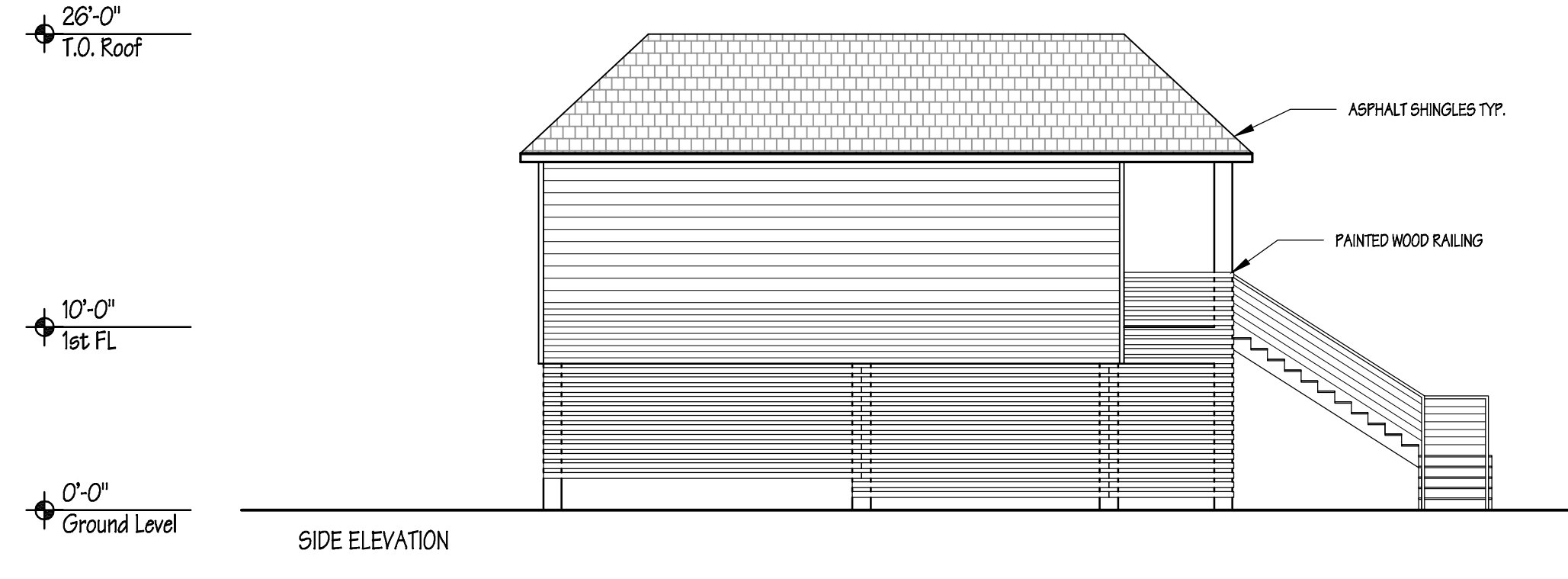
FRONT ELEVATION



SIDE ELEVATION

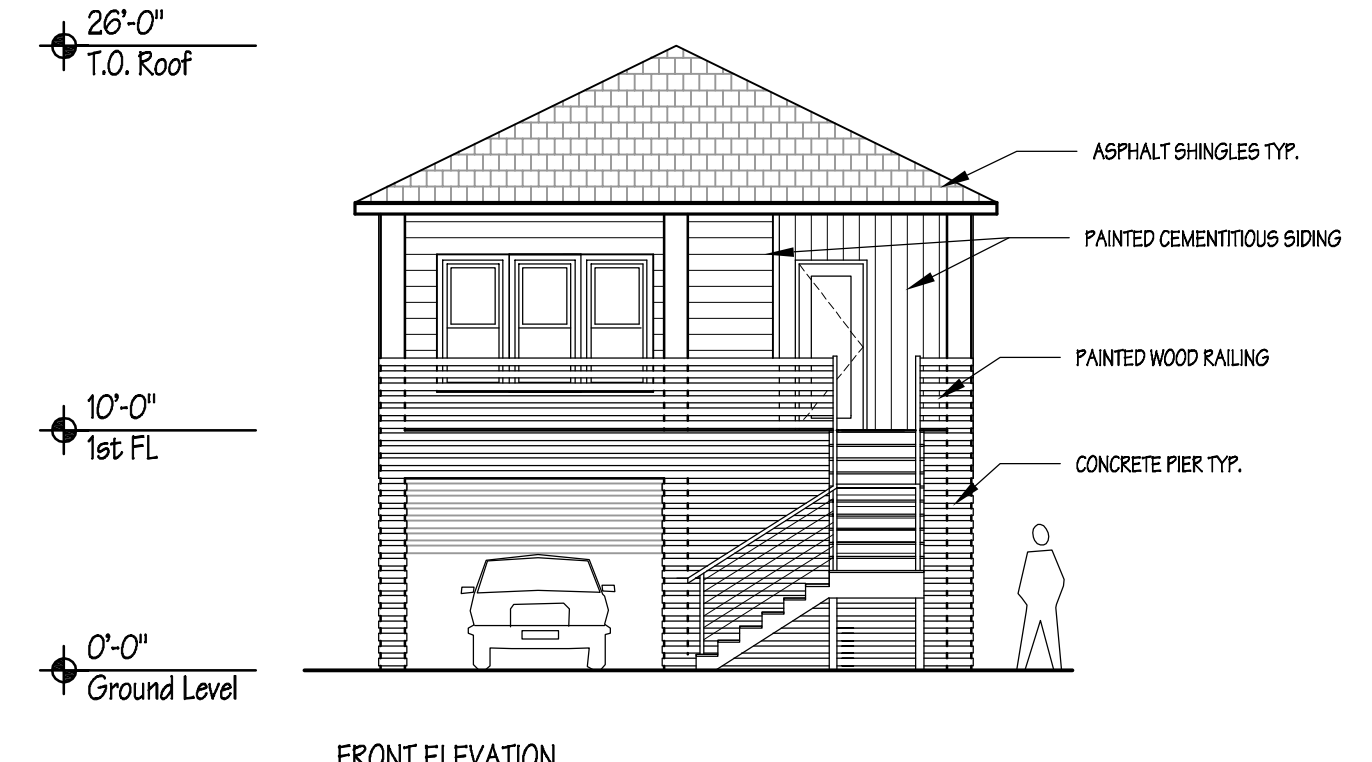


REAR ELEVATION

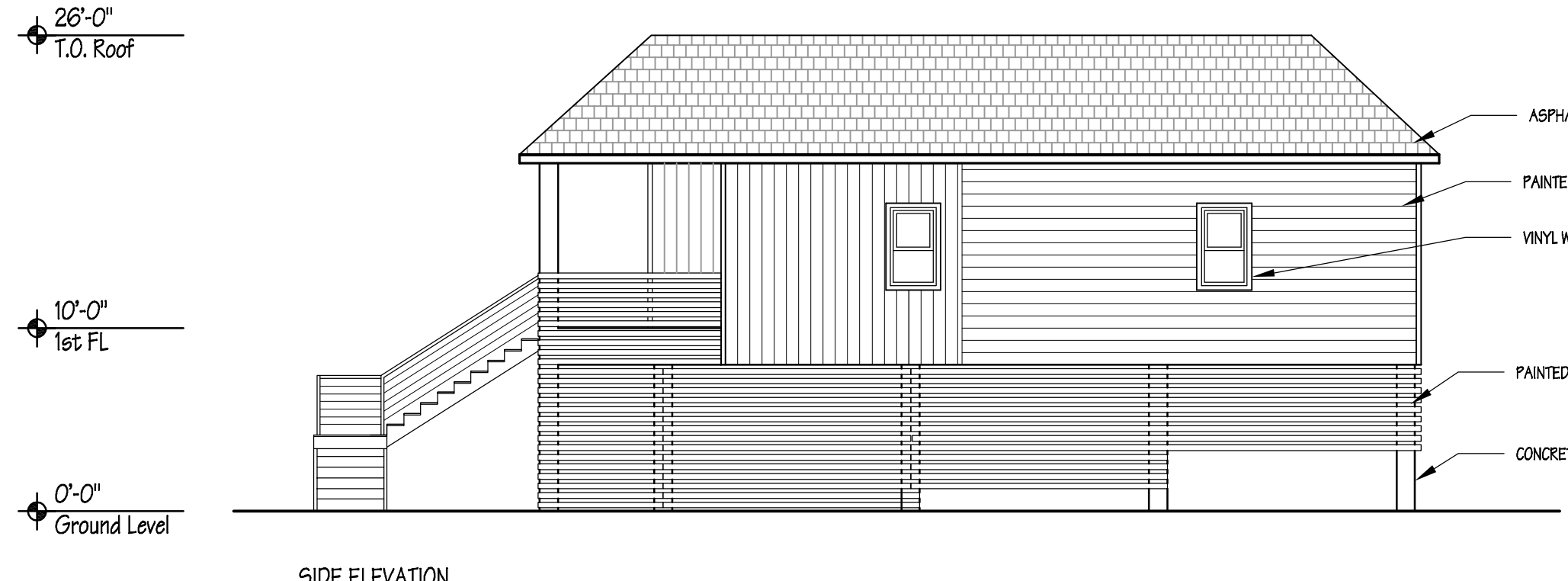


SIDE ELEVATION

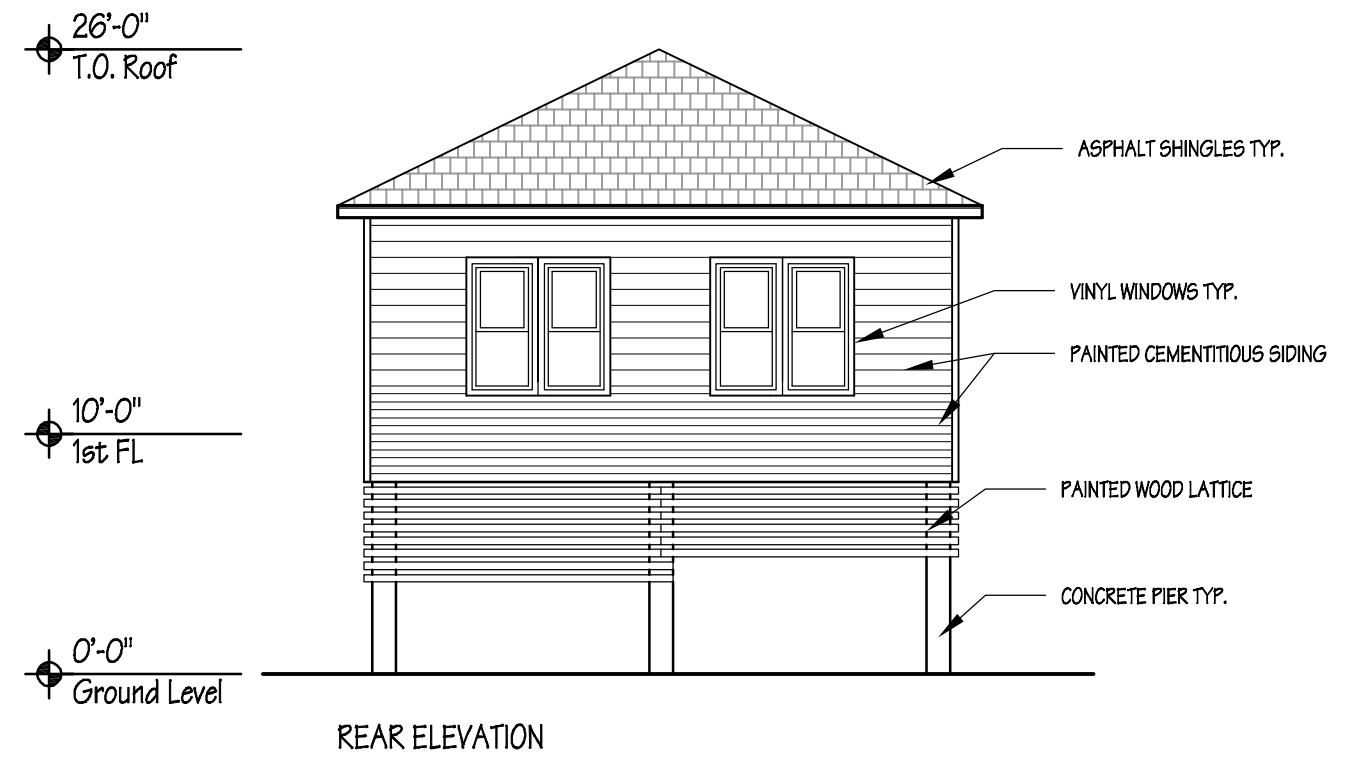
1 PROTOTYPE '4'
A-201 1/8" = 1'-0"



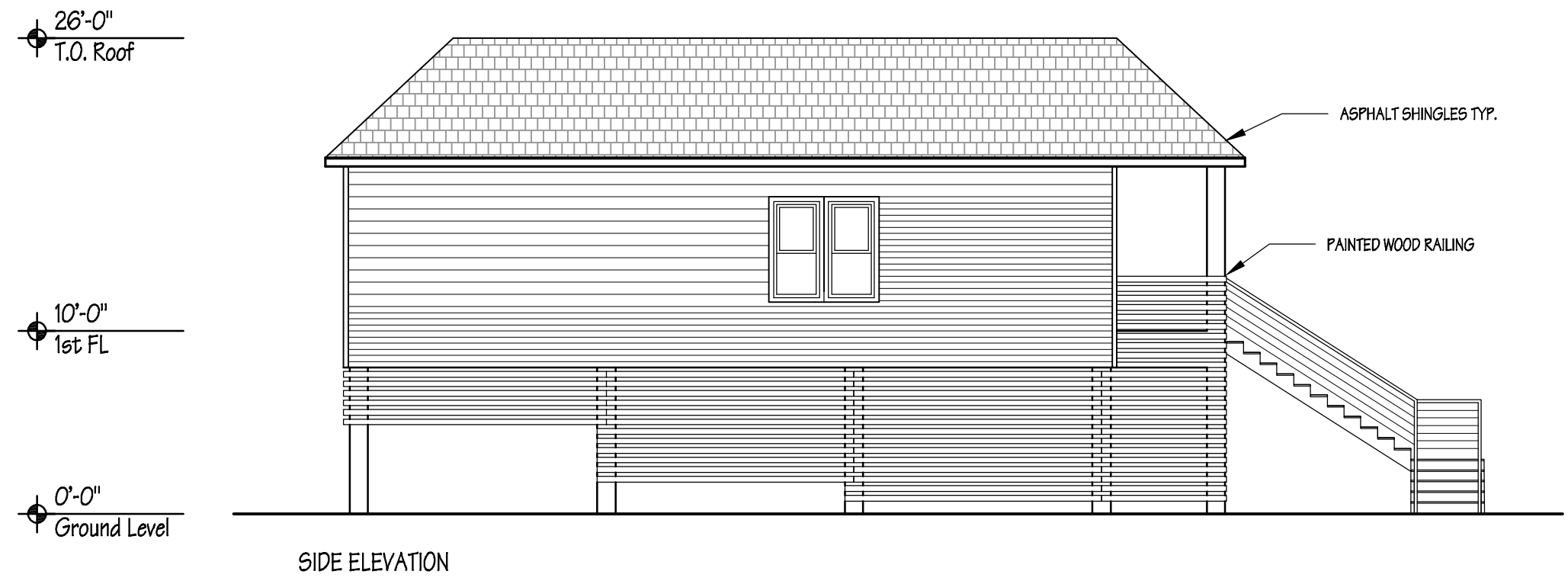
FRONT ELEVATION



SIDE ELEVATION



REAR ELEVATION



SIDE ELEVATION

2 PROTOTYPE '5B'
A-201 1/8" = 1'-0"

NYC HOUSES STATEN ISLAND

Staten Island
New York, New York

Owner
...
Owner's
Address

Developer
THE BLUESTONE ORGANIZATION
193-04 Horace Harding Expressway
Fresh Meadows, New York 11365

Architect
CURTIS + GINSBERG ARCHITECTS LLP
299 Broadway, Suite 1107
New York, New York 10007

Structural Engineer
WEXLER ASSOCIATES
12 West 32nd Street, 10th Floor
New York, New York 10001

MEP
RODKIN CARDINALE
CONSULTING ENGINEERS PC
224 West 29th Street
New York, New York 10007

No.	Date	Revision

No.	Date	Submission

Title:
ELEVATIONS

© 2013 CURTIS + GINSBERG
ARCHITECTS LLP

Job No.: 1317

Date: SEPT. 13, 2013

Scale: 1/8" = 1'-0"

Drawn By:

Checked By:

Sheet No.:

A-201

8 of 5